



# “Too risky!”

How does it feel to unlearn  
conventional support approaches  
to domestic violence and abuse?

Birmingham  
12 May 2026



Making Every  
Adult Matter

The fear of risk has stopped  
me taking positive action in  
my work



# Contributors

## Karl Brown

Specialist Housing First Worker – Couples Housing First Pilot, *Single Homeless Project*

## Lucy Campbell

Assistant Director for System Change and Domestic Abuse Organisational Lead, *Single Homeless Project*

## Kate John

Women's Recovery Co-Ordinator, Safe Space, *St Mungo's*

# Setting the scene

## The Couple



**T (man) & C (woman)**

- Rough sleeping on/off for 20 years
- Complex physical health
- Complex alcohol and substance use issues
- T physically, emotionally, financially abusive
- Multiple MARAC referrals
- T spent time in custody for abuse
- DVPOs breached daily
- All providers unwilling to house together

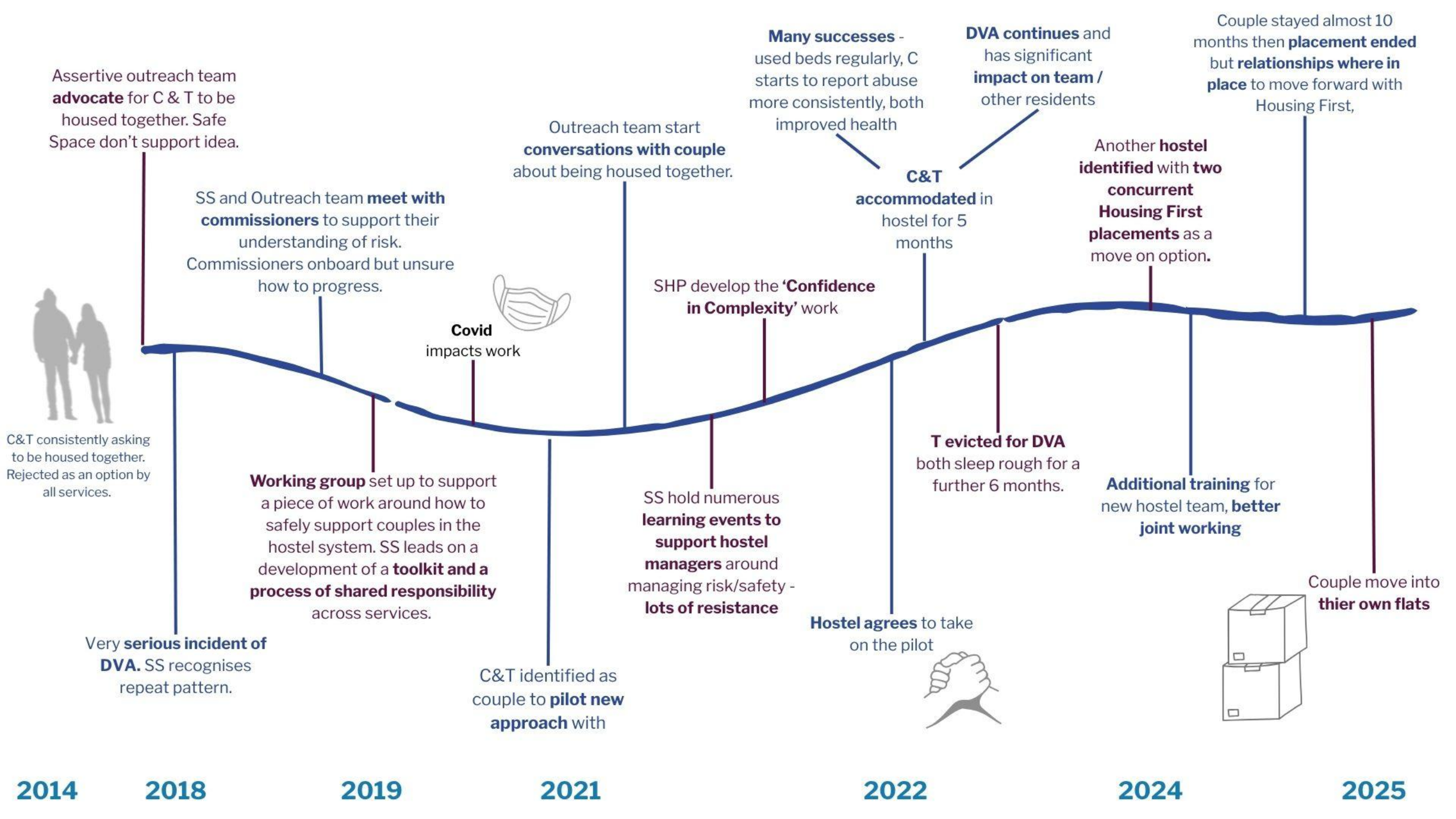


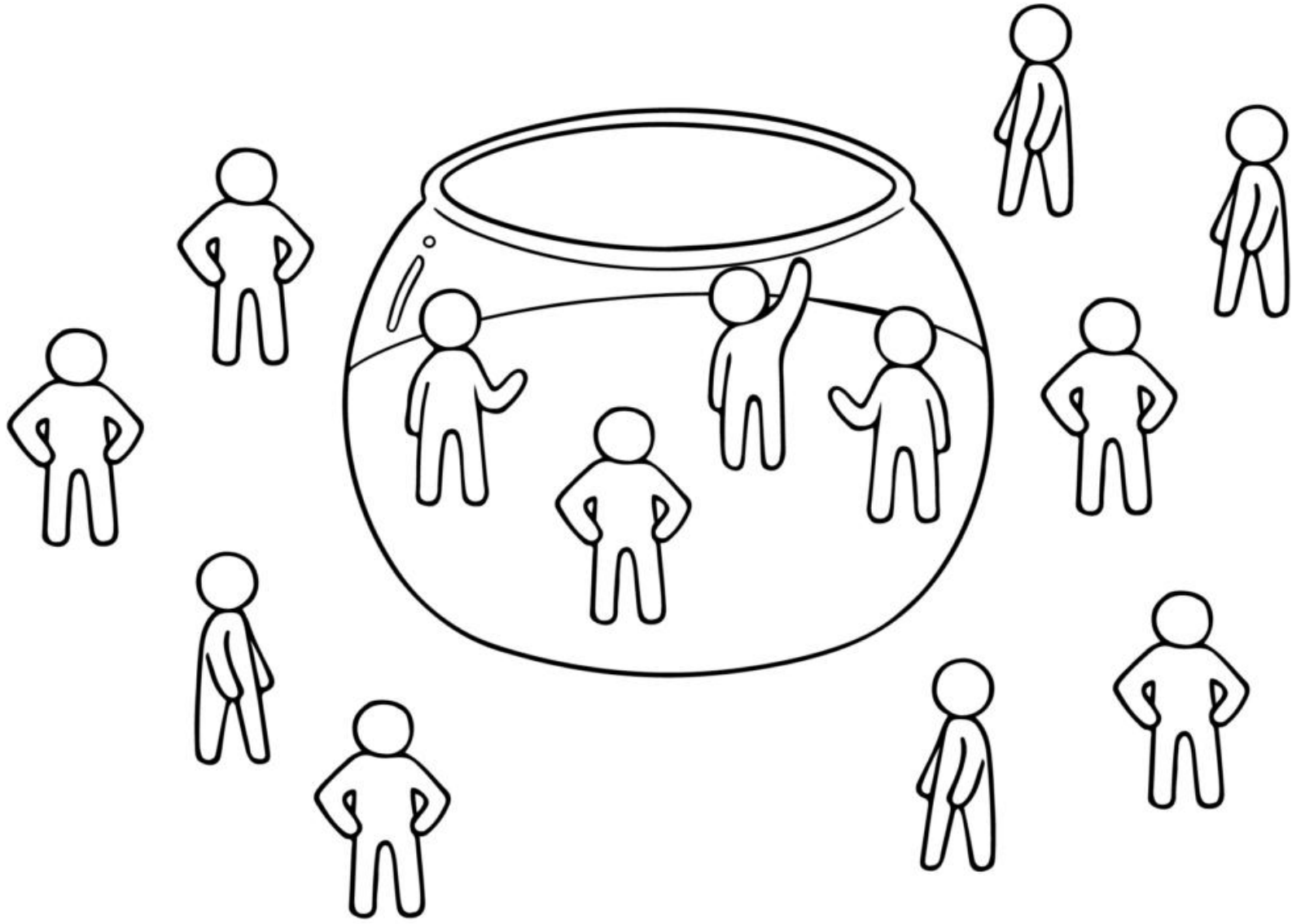
## Housing System

- Focus on 'single' bedspaces - couples cannot be housed together
- Housing providers reluctant to take on risk of DA
- Hostel workers don't feel confident working with DA
- Engagement criteria

## DVA System

- Support survivors to leave
- Not always comfortable with complexity of MD
- Not comfortable working alongside perpetrators
- Traditional ideas of safety
- Engagement criteria





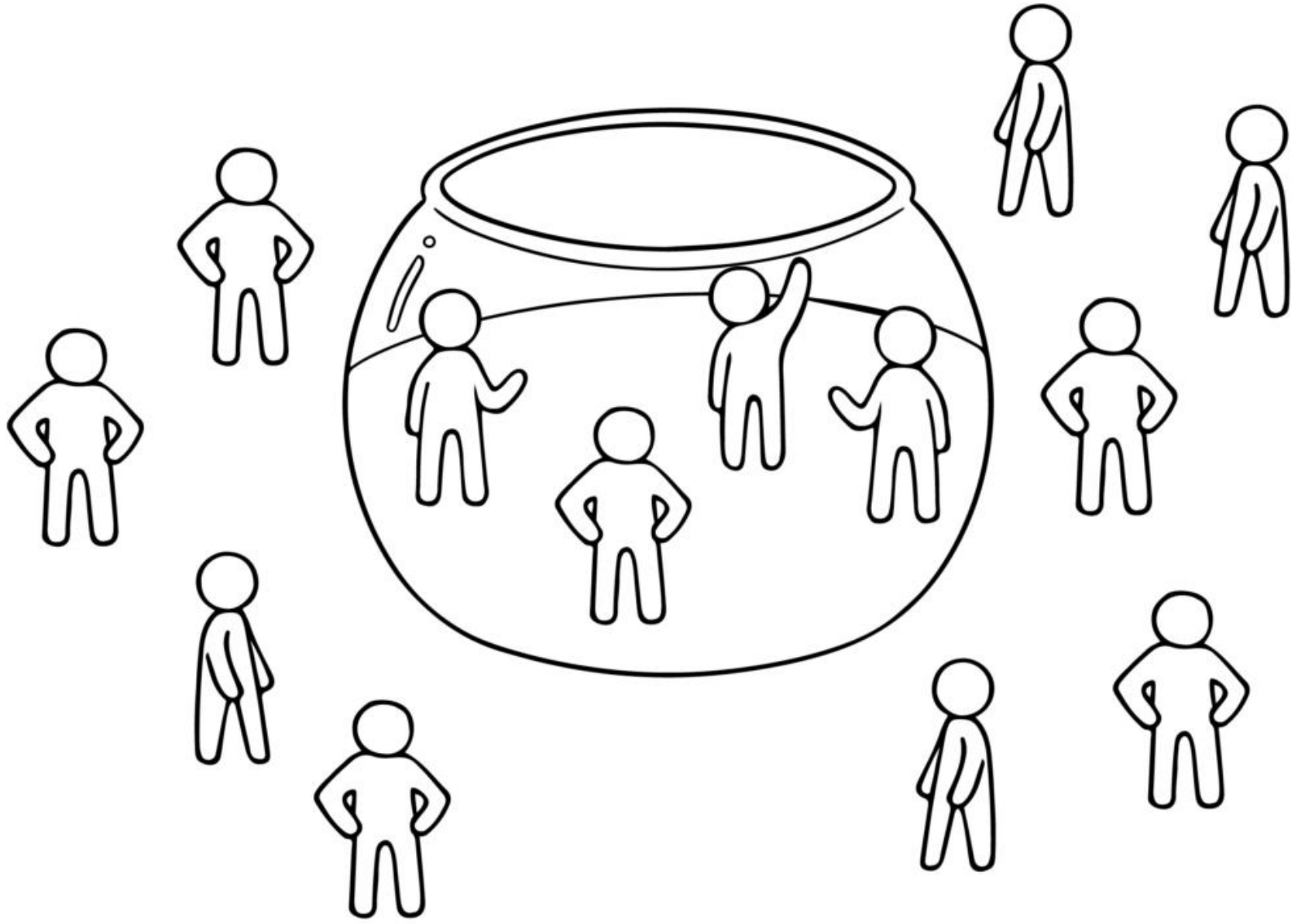
# REFLECT AND DISCUSS

What resonated?

What feels difficult or challenging?

How does this relate to your partnership work?

**As a group, write down one question that you'd like to put to the contributors.**



After this conversation, I feel  
more confident re-thinking risk  
within a multiple disadvantage  
setting



# Free resources for you to access



**Working effectively with survivors and perpetrators of domestic abuse in homelessness settings guidance for frontline staff**



**Couples Housing First Feasibility Study**



**Guidance and recommendations for Housing First and supported housing providers responding to perpetrators of domestic abuse accessing their services**

To book a one day in person workshop on 'Confidence in Complexity: Working effectively with survivors and perpetrators of domestic abuse in homelessness settings' contact [lcampbell@shp.org.uk](mailto:lcampbell@shp.org.uk)

